

## **“PT” Top Feed Shredders – 1000 Series**

### **Application:**



The “PT” Shredder is designed for mounting directly above the charging chamber of a Balemaster Baler to properly size and condition bulky whole paper wastes for high density baling.

The heavy duty Unit can also be platform mounted where the shredded materials drop directly into a scrap handling Air System for conveyance to an air separator and Balemaster Baler.

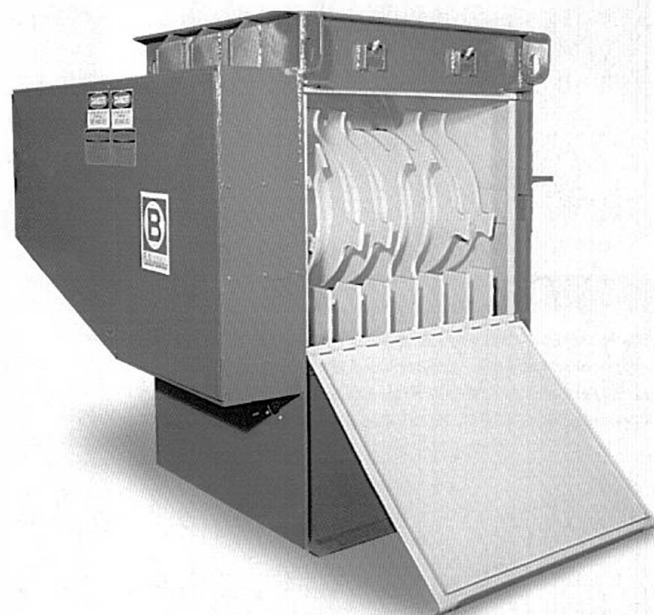
The cleated mechanical Metering Conveyor, 36" or 42" wide, is normally used to meter feed paper wastes into the Shredder. See Balemaster Bulletin 774-20A.

Common wastes fed into the Shredder includes printers signature waste, returned magazines, newspapers and paperback books of news distributors and rejects of copy paper converting lines. Slab-off, roll peel, cores or up right corrugated boxes are not recommended for feed into the Shredder.

### **Features/Benefits:**



- Rugged, “mill design” Shredder is of welded steel construction for heavy-duty service. Approximate weight 6,500 LBS.
- Factory installed electrical components meet OSHA, ANSI, National Electric Code Standards & are UL listed.
- All “PT” Shredders are 68" in height and are available with a cross-section feed opening of 27 1/2" W x 36" L or 33" W x 42" L.
- Electric drive motors available – 30,40,50,75 and 100HP.
- Shredding blades are integral with the spacer plates that are welded around the “drum” arbor. Blade/spacer plates are spirally positioned on the arbor to spread the work load. The hard tipped blades will not come off or work loose. The arbor is dynamically balanced.
- Arbor drum and spacer plate assembly creates an extra, heavy-duty flywheel effect during operation; reaching a tip speed of 3,200 FPM.
- Fully enclosed sheave & 400 RPM V-belt drive System meets OSHA standards and keeps noise to a minimum.
- Serrated “shark’s tooth” toe plate working with shredder blades explodes the materials, creating a random shred desirable for high density baling.
- The rotatable arbor is suspended in spherical roller bearings which are “pillow block” mounted.
- Hanger bars and integral adjustable grid rod System located below the revolving arbor control shred size to accomplish maximum finished bale density and integrity. 5 or 8 grid System available.
- Rated Shredder capacity is 2 to 4 lbs./minute/HP with grid rods removed with any of the 10 different models available.



Access door to Arbor shown open for photograph.

Balemaster Shredders are engineered to be the most rugged, reliable, efficient and economical means of properly preparing paper and paperboard materials for today’s high-density baling requirements.

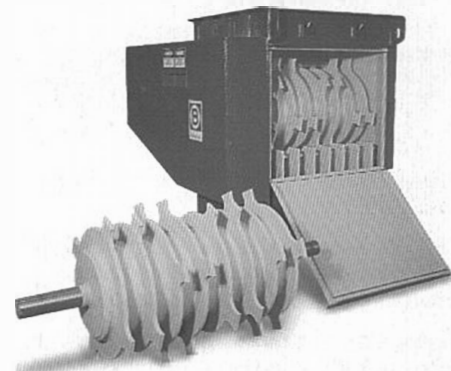
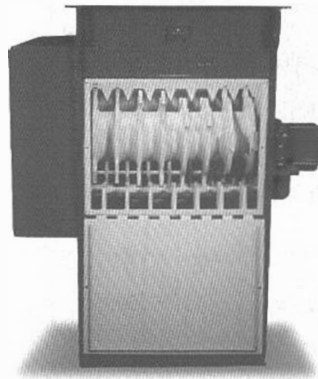
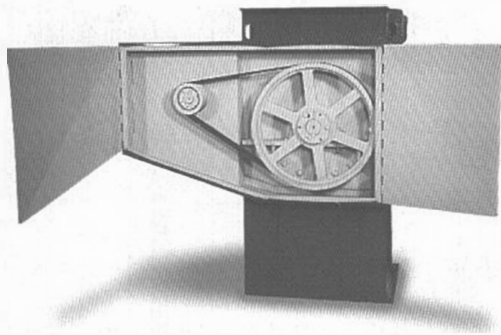
### **Industry Usage:**



- Newspaper Distributors - Returned Magazines, Paperback Books
- Commercial Printers - Signature Wastes & Make Ready
- Business Forms - Make Ready & Rejects
- Newspaper Publishers - Make Ready, Rejects & Returns
- Envelope Manufacturers - Make Ready, Rejects - Grade Separation
- Telephone Directory Printer - Make Ready & Rejects
- Paper Mills - Sheeter & Finishing Lines
- Folding Carton Plants - Die-cuts & Smaller Rejects
- Label Manufacturers - Make Ready & Rejects

**“Another Engineered Product from Balemaster”**

# **B** *Balemaster*<sup>®</sup>



## **Enclosed Sheave & V-Belt Drive:**



Balemaster's commitment to quality and safety is apparent in the Fully Enclosed 1.5 times motor capacity, sheave and V-belt drive system... designed to meet OSHA standards and reduce noise.

## **Spirally Positioned Blades:**

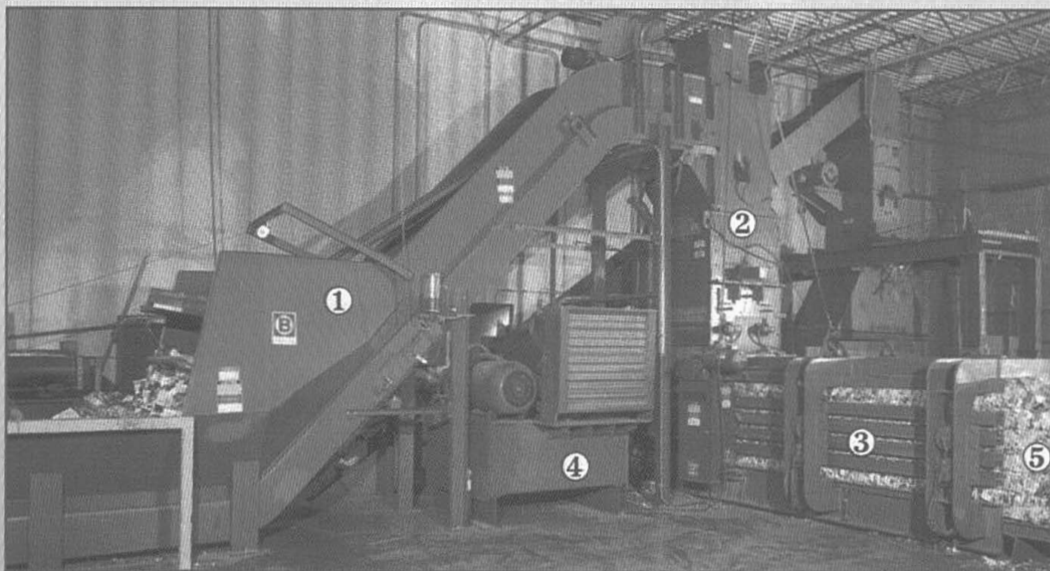


"Shark tooth toe plate" design provides a cutting surface that maximizes impact efficiency to minimize shock. The spirally positioned 1" wide arbor blades serve to "explode" the paper materials on impact creating random shreds sized by the "grid rod" System for Air Conveyance to the Baler or dropped directly into the Baler.

## **Extended Arbor Life:**



The reinforced, tubular steel, drum arbor is rotatable to utilize the second cutting edge of all blades doubling their service life. Path for arbor removal is horizontally straight out the open arbor access door.



## **"PT" Shredders-1000 Series Shredding System:**



1. Balemaster Metering Conveyor, 2. "PT" Shredder, 3. Auto Ty Balemaster Baler,
4. Remote Baler Hydraulic Power Package, 5. Finished Bale

***Balemaster System Components... The Standard of Quality in Design, Utility and Technical Excellence***

**ECOTAINER Balers & Containers**

**Western Canada Sales, Installation & Service**

**1-800-561-6525**

**[www.ecotainer.ca](http://www.ecotainer.ca)**

Ask for information on the most complete line of high performance, horizontal automatic Balers available to industry on the market today. If material is baleable, Balemaster has the quality Baler to meet your needs.

As we constantly strive to improve our product, specifications are necessarily subject to change without notice.

***Balemaster*<sup>®</sup>**

**980 Crown Court – Crown Point, Indiana 46307  
Phone: (219) 663-4525 Fax: (219) 663-4591**