

Balemaster's Automatic Continuous Open-End Baler

The High Density E-Series

SERIES



**Balemaster Baler with
Automatic Wire tying,
MODEL E-430**

Labor and Money Saving Features:

NO BALER OPERATOR: Heavy-duty automatic wire tying for maximum automation and rapid return on investment. Tier supplied initially or added at a future date.

PRODUCTION AND PERFORMANCE: Models to meet your requirement from 5 bales per day to 10 bales per hour. Bale density, depending on material ranging from 25-30 lbs. per cubic foot.

FREIGHT SAVINGS: Models available with main baling cylinder diameters to meet bale density requirements. Optimum bale density comes by using hydraulic Side Cylinder Density Control with completely automatic adjustment on each stroke of the baling ram.

PAPER DUST CONTROL: Accomplished with our "Designed-in" encapsulated baling ram compartment which provides decreased dust – and fire hazard – in the general baling area resulting in better employee safety and morale.

RELIABILITY WITH REDUCED OPERATING COST: Simplicity of design provides the ultimate machine sophistication. Readily accessible hydraulic components with Energy Efficient Hydraulic Power Package reduce operation costs and provide extra capacity.

DEPENDABILITY: Heavy welded structure with the finest hydraulic and electrical components. All necessary electrics and controls supplied.



www.ecotainer.ca

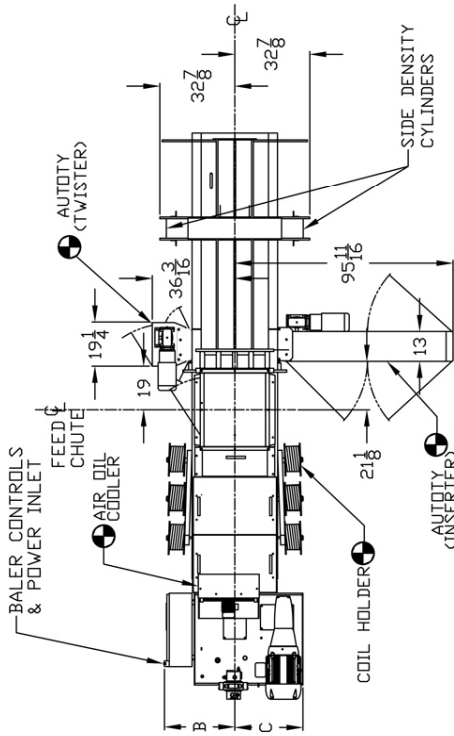
ECOTAINER Balers & Containers - Western Canada Sales,
Installation & Service

1-800-561-6525

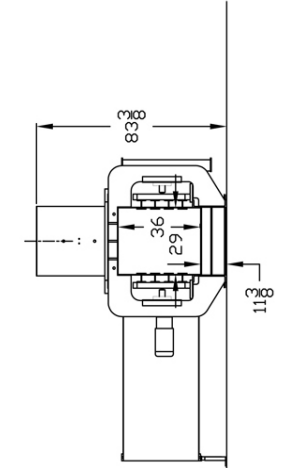
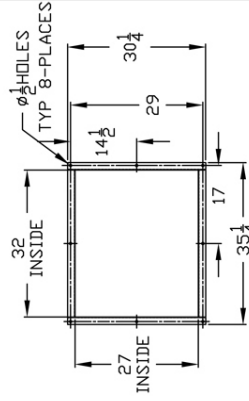
www.ecotainer.ca

BALE SIZE 29 X 36 X LENGTH

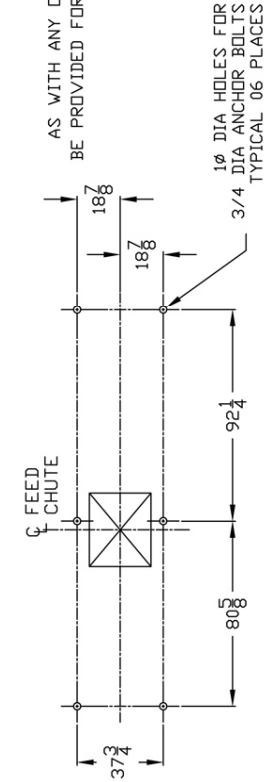
DIM	GROUP 1					GROUP 2				
	E 390	E 660	E 940	E 1250	E 1300	E 430	E 560	E 810	E 850	E 1110
A	20 H.P.	25 H.P.	30 H.P.	30 H.P.	50 H.P.	25 H.P.	30 H.P.	30 H.P.	50 H.P.	75 H.P.
B	21' 5"	21' 5"	21' 5"	21' 5"	22' 4"	21' 5"	21' 5"	21' 5"	22' 4"	22' 4"
C	32	32	32	32	38	32	32	32	38	38
D	40	40	40	40	51	40	40	40	51	51
E	26 9/16	26 9/16	26 9/16	26 9/16	34 1/2	26 9/16	26 9/16	26 9/16	34 1/2	40 3/4
F	54 1/8	54 1/8	54 1/8	54 1/8	60	54 1/8	54 1/8	54 1/8	60	60
G	16	16	16	16	16	16	16	16	16	16



FEED CHUTE FLANGE DETAIL



AS WITH ANY OTHER PIECE OF EQUIPMENT, ADEQUATE CLEARANCE SHOULD BE PROVIDED FOR USUAL CLEANING, SERVICE AND MAINTENANCE OPERATIONS.



F	11-22 2006	VT	MOEST 1/2" DIA ANCHOR BOLTS 3/4" DIA W/ 1/2 DIA	REMARKS
E	07-07 2005	VT	RETRAW UPDATED DIMENSION TABLE	
NO.	DATE	IN.		

BALEMASTER®

DIV. OF EAST CHICAGO MACHINE TOOL CORP.
CROWN POINT, INDIANA

BALER DIMENSION DRAWING
4000G 29 X 36 F.C.32"

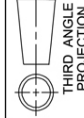
DO NOT SCALE
WORK TO DIMENSIONS
SCALE: 1=50

B/M YES NO
REQD YES NO

DR. GOLINSKI Ch. APP.

08-21-91 234B0088-00
DATE:

TOLERANCES - UNLESS OTHERWISE SPECIFIED:
FRACTIONAL +/- .164
DECIMAL +/- 0.005
DECIMAL +/- 0.01



THIS DRAWING IS THE PROPERTY OF EAST CHICAGO MACHINE TOOL CORP.

THE INFORMATION DISCLOSED HEREIN IS NOT TO BE REPRODUCED, COPIED OR OTHERWISE DISPOSED OF, DIRECTLY OR INDIRECTLY, AND IS NOT TO BE USED IN THE MAKING OF DRAWINGS, PRINTS, APPARATUS, OR PARTS THEREOF, EXCEPT AS SPECIFICALLY AUTHORIZED IN WRITING BY EAST CHICAGO MACHINE TOOL CORP.