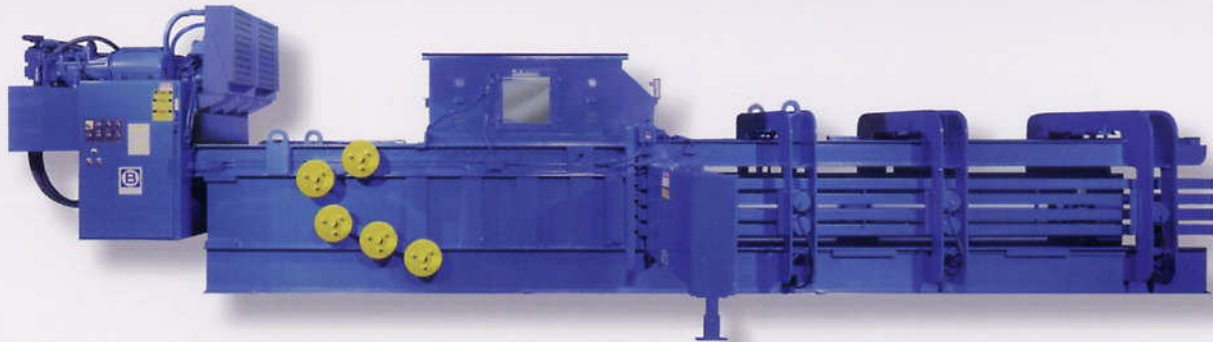


# Balemaster® Balers

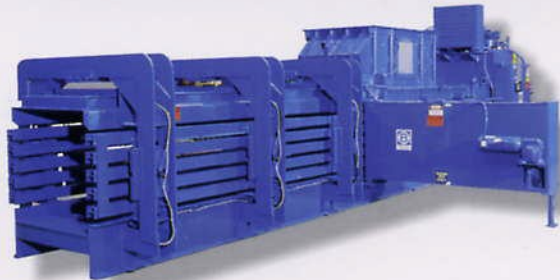
*we offer the industry's largest selection of quality balers*



Large Recycler Model - 25 tons per hour



Corrugated / Folding Carton Plant Baler - 1500 lb. bales



Large Printer Model - 15 tons per hour



Distribution Center Model



Manufacturing / Assembly Plant Model

## *A Baler to Meet Your Exact Needs*

### **Industry's Broadest Line of Balers - 100+ Models**

Whether your requirements call for a single 1000 lb. bale/day or 20 bales/hour we have the baler to meet your exact needs.

### **Balers for a Wide Variety of Applications**

Our Baler Models incorporate an ideal combination of Accessories to meet your requirements. Recommended models vary depending upon feed method.

### **The Industry's Most Efficient and Reliable Auto-Tier**

Unique design requires the fewest number of component parts. The Auto-Ty is easy to maintain and service. Reliability is achieved through simplicity.

### **Energy Savings and Efficiencies**

Our hydraulics provide maximum efficiencies, using regenerative circuits and dual power packs to minimize horsepower usage and save energy.

## *What Makes Our Balers the Best*

Balemaster distinguishes itself as a leading innovator of baling technology having designed and installed balers for a wide range of applications worldwide. Our product line addresses the requirements of our customers, offering superior design, feature-rich touch screen diagnostics and controls, industry leading energy efficiencies, easy maintenance, increased reliability and longer service life...and backed up by flexible service programs. Simply put, our balers are built to be the best.

**baler** applications include:

Paper • Corrugated • Folding Carton • Chipboard • Newsprint • Wax or Poly Coated Stock • Non-Wovens • Pulp • Aluminum and Steel Cans • P.E.T. and H.D.P.E. Bottles • Foils • Textiles



# Balemaster® Shredders & Hoggers

*dependable performance in the most demanding of applications*



1400 Series "Quiet" Shredder - 25 to 40 HP  
63, 76, 90, 103 and 117" Feed Widths

The 1400 Series Low RPM  
**Quiet Shredder** an industry favorite

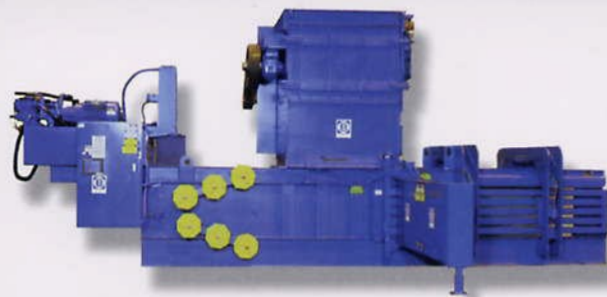
Our quiet shredder offers high capacity - up to 10,000 lbs. per hour of corrugated / folding carton sheet waste and cores. Solid steel shafts and blades lessen maintenance costs and downtime. Low RPM arbor rotation makes less noise during operation and provides a low dust working environment.



1200 Series Hogger - 50 to 100 HP  
62, 77, 92 and 107" Feed Widths



1000 PT Series "Piggy-Back" Shredder  
36 and 42" Widths, 30 to 100 HP



High Volume - Heavy Duty Shredder, Mounted on Baler  
48 x 70" Feed Opening, 100 to 300 HP



1500 Series Floor Sweep Shredder  
38 and 54" Widths, up to 30 HP

## *Built to Uncompromising Standards*

### **Heavy-Duty Construction Built for Dependability**

Every part of our shredders are expertly designed and constructed for heavy-duty operations and offer the longest service life in the industry.

### **Advanced Blade and Arbor Design**

Our advanced blade and arbor design can be matched to your requirements, achieving the best shredded piece size for maximum capacity and bale density.

### **Easily Integrated into Your System**

Designed for easy servicing and integration into a fully automatic waste handling system. Custom configurations are available to satisfy space constraints.

### **Low Noise Models**

We've perfected noise control with a host of engineered noise suppression techniques, featured in some of our models, including the 1400 Series.

## *Meeting your High Performance Needs*

Balemaster Shredders are the preferred high performance choice for a variety of wastes, including; corrugated, folding carton, paper, magazine, book, slabs, butt rolls and cores, etc. Models are engineered for heavy duty service with quality welded steel construction. Many advanced features are provided to maximize throughput capacity. User friendly Touch-Screen controls are included with most models.

**Engineering Vision** is the primary ingredient of every **Balemaster** product



# Balemaster® The Solutions Provider

helping companies worldwide automate waste handling



**Paper Mills**



**Paper Converters**



**Folding Carton Mfg.**



**News Distributors**



**Recyclers / Haulers**



**Corrugated Box Mfg.**



**Warehouse / Distribution**



**Printers / Binders**



**State of the Art 100,000 Sq. Ft. Facility**

**Balemaster Products  
are Installed  
in More Than  
55 Countries  
Serving a Host of  
Key Markets**



## **Balemaster®**

*Trust an Industry Leader*

Balemaster is proud to be a world market leader in the industrial baler industry. Our constant emphasis on engineering excellence, quality manufacturing and assembly and most importantly innovation assures our customers that they are selecting the best. Ask a Balemaster representative today how we can make the difference in successfully implementing automatic waste handling solutions into your operations.

### **ECOTAINER**

**Balers & Containers**

**Western Canada Sales,  
Installation & Service**

**1-800-561-6525**

**tom@ecotainer.ca**

**www.ecotainer.ca**