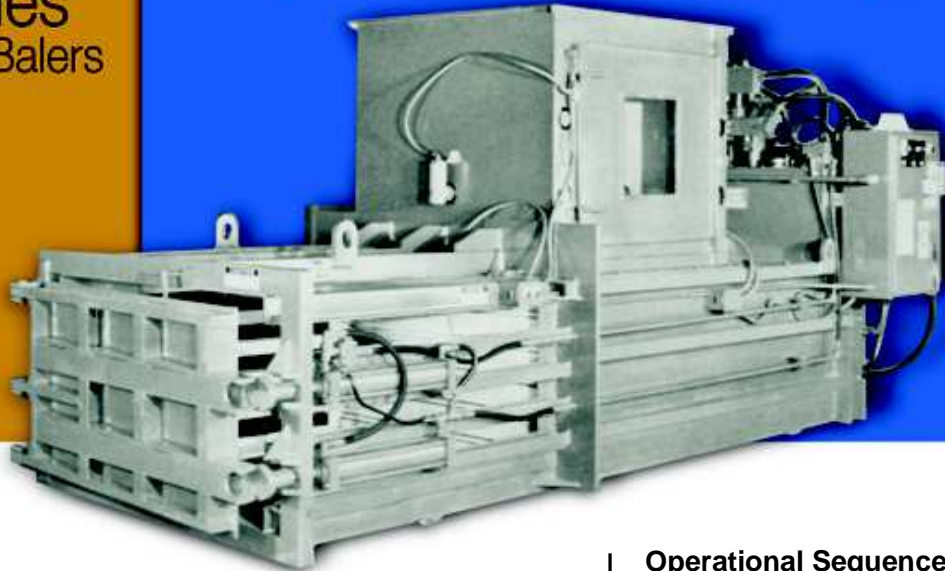


Balewel[®]
by **Balemaster**[®]

1600 Series
Closed Door Balers
Model: 1672-AO

- **Automatic Cycling**
- **Triple Oversize Feed Hopper**



APPLICATION

Models of this series are designed for whole extra large upright corrugated boxes. The Triple Oversize Feed Hopper also provides greater output per baling ram stroke with smaller corrugated boxes. The triple oversize hopper eliminates pre-preparation such as break down, pre-crushing, shredding or hogging of material.

Automatic Operation provides capacity up to 1.5 tons per hr. in whole corrugated boxes. Ideal for operation requiring 3 to 15 "mill weight" bales daily. Feed chute measures 42" x 60". Height of the chute is 48". Perfect for feed from gravity chute or mechanical conveyor. Bales range in weight from 1000 to 1300 lbs. relating to type and condition of material. Bale size 44" wide x 30" high x 72" length.

If machine is to be used in a re-baling operation then material must be fluffed out and/or mixed in with material which has not been baled before.

Baler is supplied as standard with a Regenerative Hydraulic Circuit providing an "up and back" ram cycle of 50 seconds. Unique "Break-away Shear Bars" which do not require sharpening are supplied as standard.

GENERAL INFORMATION

Units supplied factory tested with Open Drip Proof motor, motor starter and standard controls, operation oil, 125 wire bundle of ties, and wired for 208, 230, 460 or 575 volt, 3 phase, 60 hertz. Factory installed electrical equipment meets OSHA and National Electric code. Control circuit 115 volts. Hydraulic high pressure relief valve protects baler during operation.

When ordering, always specify voltage, phase and hertz desired. Totally enclosed fan cooled (t.e.f.c.) or other type motors along with special electrics available at slight additional charge. Contact factory for delivery and price.

Bale ejection door opening and electrical control panel locations are provided as pictured unless otherwise ordered. Optional windowed feed chute door with control circuit interrupter is pictured.

See reverse side for available accessories.

Operational Sequence Automatic – Operates Unattended While Baling

The feed chute accepts and accumulates scrap from mechanical or air conveyor or other gravity fed system to the height of the cycling eye. This electric eye sensor activates automatic cycle and the hydraulic baling ram pushes the loose scrap into the sealed compression chamber forming an increment of bale length.

If feed hopper is empty, baling ram rests in storage position. The ram will continue to cycle as long as the sensor is blocked or until the pressure switch is activated indicating the preset pressure has been reached and a bale has been formed. The baling ram then advances to the "tie off" position and a bright light signals the operator for bale "tie off".

The operator then ties-off bale – opens the end ejection door – positions the bale length control arm in front of bale and resumes automatic baling by pushing reset button.

Baling continues until the bale ejection limit switch is activated, signaling the operator to remove the tied bale. After bale removal the bale length control arm is returned to its stored position and the operator closes the ejection door, pushes reset button and continues baling.

ECOTAINER Balers & Containers

Western Canada Sales, Installation & Service

1-800-561-6525

www.ecotainer.ca

1600 Series Closed Door Balers
Models: 1672-AO – Automatic Cycling, Triple Oversize Feed Hopper

SPECIFICATIONS

www.Balemaster.com

Model 1672-AO

Completed Bale Size (inches) W., H., L.	44 x 30 x 72
Feed Chute Size (inches) W., H., L.*	44 x 60 x 48
Loading Chamber Volume (cu. ft.)	46
Number of Wire Tiers per Bale	4
Ram Thrust Total (lbs.) at 2000 psi	113,100
Ram Thrust Total (lbs.) at 2500 psi	141,400
Ram Thrust in lbs./sq. in. of Ram Face at 2000 psi	91
Ram Thrust in lbs./sq. in. of Ram Face at 2500 psi	115
Stroke Cycle with Regeneration (seconds)	50
Motor Horsepower	25
Balelocks	11
Approx. Gross Wt. (lbs.)	17,450

*Baling ram guides assure extended baling cylinder life accounting for 2" differential between feed chute and bale width.

Available Accessories

Disconnect Switch – Recommended – fused, mounted on baler.

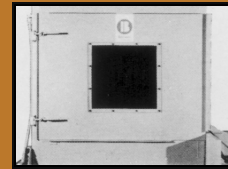
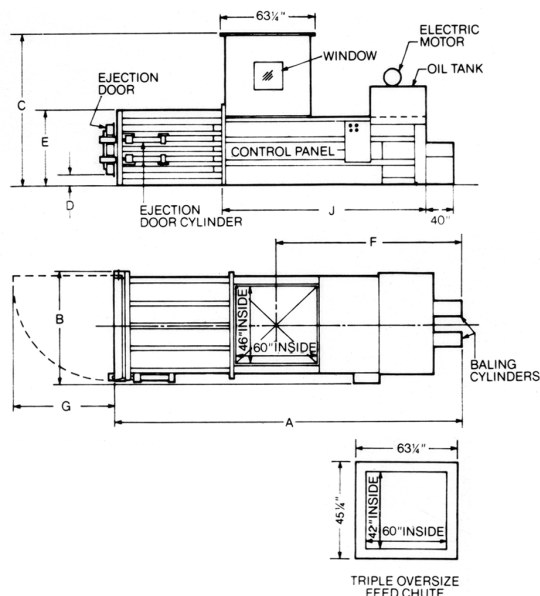
Windowed Feed Chute Door with Control Circuit Interrupter – Recommended – as pictured 36" high x 48" long.

Special Hydraulic Circuit – Two pressure pumping system termed a "High-Low" System for 25 Second complete cycle time. Energy saver as a 50 HP motor would be required with the common single pressure pumping system.

Three Position Ram Selector Switch – conveniently permits the baler to accommodate different grades or classifications of materials.

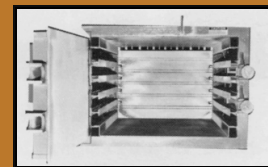
Dimensions

	1672-AO
A	20' 8.75"
B	5' 0"
C	6' 10.25"
D	4.25"
E	3' 2.5"
F	10' 3.375"
G	4' 8"
J	9' 7"



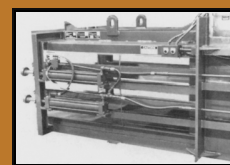
Large Feed Chute and Hopper

- Oversize measures 42" wide x 60" long x 48" high.
- Scrap accepted from mechanical or gravity feed system.
- Electric eye automatically activates baling ram when materials reach correct level in chute.
- Electric eye is unaffected by sporadic noise or radio frequencies and vibrations.
- Optional Windowed Feed Chute Door with Control Circuit Interrupter.



Design Features

- Conveniently located NEMA electrical cabinet with operator controls. Simply connect to power source.
- Optional Disconnect Switch.
- Operator signal light.
- Removable baling ram compartment cover for easy maintenance.
- Accessible oil filler cap and automotive type dip stick to check fluid condition and level.



Rugged Construction

- Heavy construction of bulkhead type compression door and "I" beam side rails to withstand greater operating pressure.
- Heavy duty locking arms actuated by two push button controlled, hydraulic cylinders with anti-creep valves.
- Designed to withstand operating pressures without distortion.